

VULCANO



Job Name		Contractor	
Location		Distributor	
Engineer		Date	
Submitted to		Model	THS-100HV
Schedule ID			

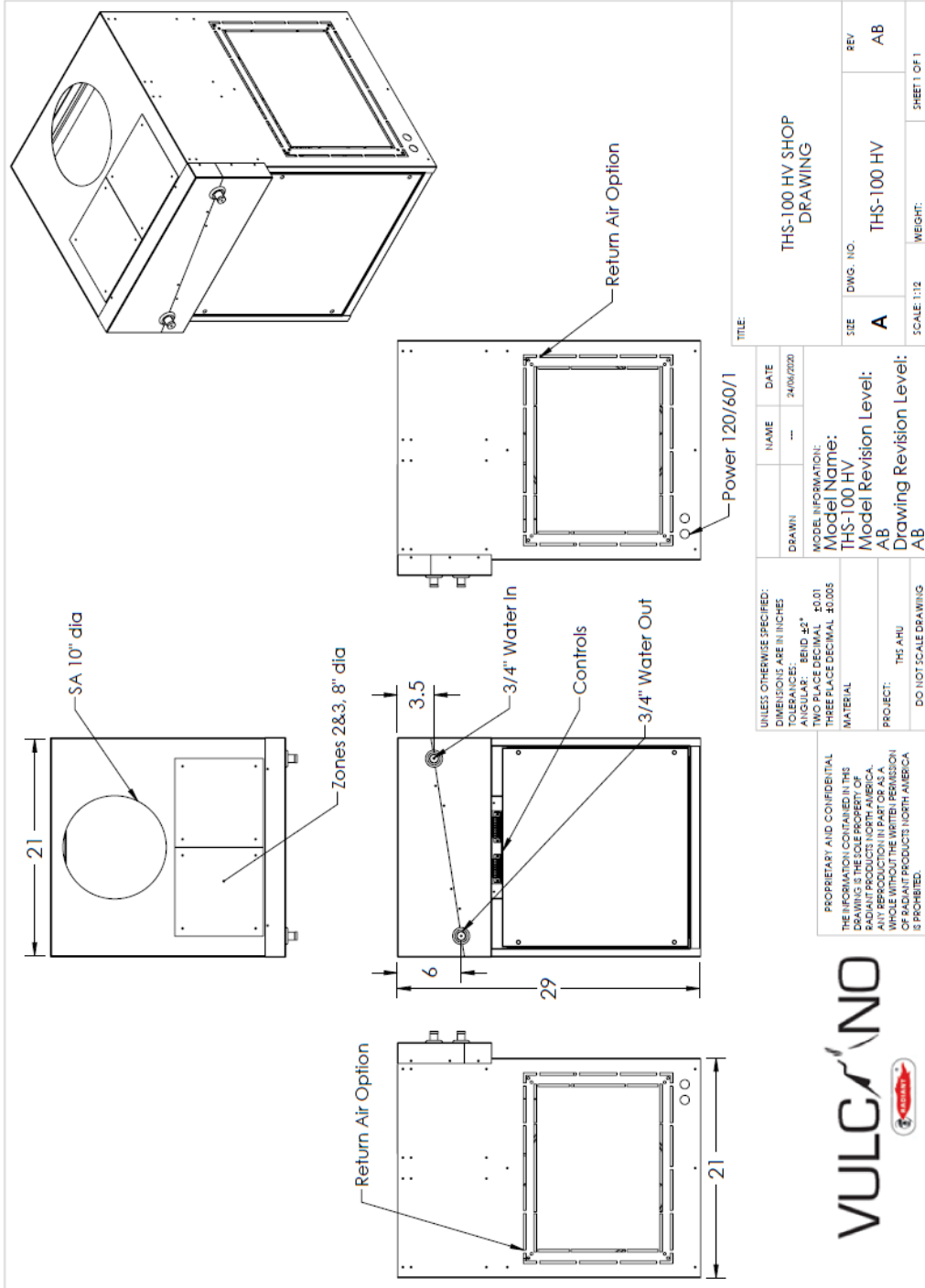
Specification	THS 100-HV
Btu Heating @180 F EWT	97.5 MBH
Btu Heating @160 F EWT	80 MBH
Btu Heating @140 F EWT	61.5 MBH
Btu Heating @120 F EWT	45 MBH
Rated water flow (GPM)	7
Piping connection, Copper (inch)	3/4
Cooling Capacity (ton)*	2.5-3
CFM @ 1.5" external static pressure	950
Recommended filter size	16x20
Cabinet Size W x D x H (in)	21x21x29
Supply Air opening W x D (in)	11.8x17.8
Return Air Opening W x D (in)	18.3x14.3
Supply voltage	115/60/1
Fan motor (hp)	3/4
FLA	9.2
MCA	12.5
MOP	15
Shipping weight (lb)	120
Shipping Dimensions (WxDxH in)	36x24x26

* select motor tap to match condenser requirements

Features:

The THS 100-HV is a high efficiency hydronic air handler with constant speed EC Motor suitable for high velocity ducting applications. Use with Radiant zone dampers THS-2ZHV-2 for 2 or 3 independent comfort zones. The ECM low speed is only 45% of maximum making for quiet single zone calls or continuous ventilation and filtration.

Shop Drawing:



PROPRIETARY AND CONFIDENTIAL
 THE INFORMATION CONTAINED IN THIS
 DRAWING IS THE SOLE PROPERTY OF
 RADIANT PRODUCTS NORTH AMERICA.
 ANY REPRODUCTION IN PART OR AS A
 WHOLE WITHOUT THE WRITTEN PERMISSION
 OF RADIANT PRODUCTS NORTH AMERICA
 IS PROHIBITED.

UNLESS OTHERWISE SPECIFIED:
 DIMENSIONS ARE IN INCHES
 TOLERANCES:
 ANGULAR: ±0.1°
 HOLE POSITION: ±0.01
 HOLE SIZE: ±0.005
 THREE PLACE DECIMAL: ±0.005
 MATERIAL:
 PROJECT: THE AHU
 DO NOT SCALE DRAWING

MODE INFORMATION:
 Model Name: THS-100 HV
 Model Revision Level: AB
 Drawing Revision Level: AB

DRAWN	NAME	DATE
		24/06/2020

TITLE: THS-100 HV SHOP DRAWING

SIZE	DWG. NO.	REV
A	THS-100 HV	AB

SCALE: 1:12 WEIGHT: SHEET 1 OF 1